

# **Racing Kit Parts List**

This catalog covers:

'09~'11 ZX600 R9FR/RAFR/RBFR Engine

GRID NO.

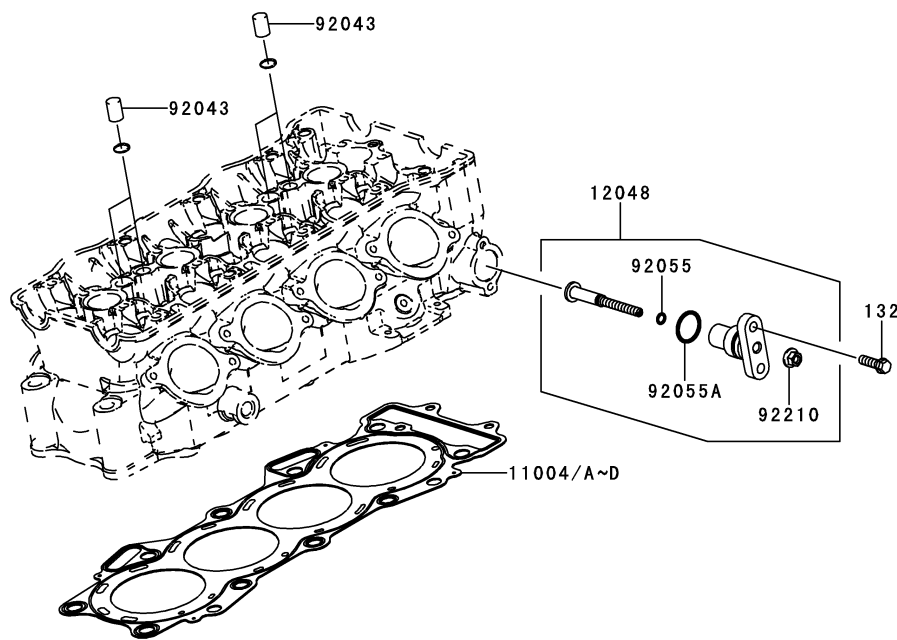
**B-3**

This grid covers:

**Cylinder**

E1121

Ref. No.	Part No.	Description	Spec Code	Quantity-ZX600		
				'09	'10	'11
				R9FR	RAFR	RBFR
11004	11004-0067 (OPTION)	GASKET-HEAD,T=0.70		1	1	1
11004A	11004-0068 (OPTION)	GASKET-HEAD,T=0.60		1	1	1
11004B	11004-0069 (OPTION)	GASKET-HEAD,T=0.55		1	1	1
11004C	11004-0070 (OPTION)	GASKET-HEAD,T=0.50		1	1	1
11004D	11004-0071 (OPTION)	GASKET-HEAD,T=0.45		1	1	1
12048	12048-1175 (OPTION)	TENSIONER-ASSY		1	1	1
92043	92043-1506 (OPTION)	PIN,10X14		4	4	4
92055	92055-011 (OPTION)	RING-O,5MM		1	1	1
92055A	92055-086 (OPTION)	RING-O,18.8X1.9		1	1	1
92210	92210-0630 (OPTION)	NUT,FLANGED,6MM		1	1	1
132	132BA0620 (OPTION)	BOLT-FLANGED-SMALL,6X20		2	2	2



This catalog covers:

'09~'11 ZX600 R9FR/RAFR/RBFR Engine

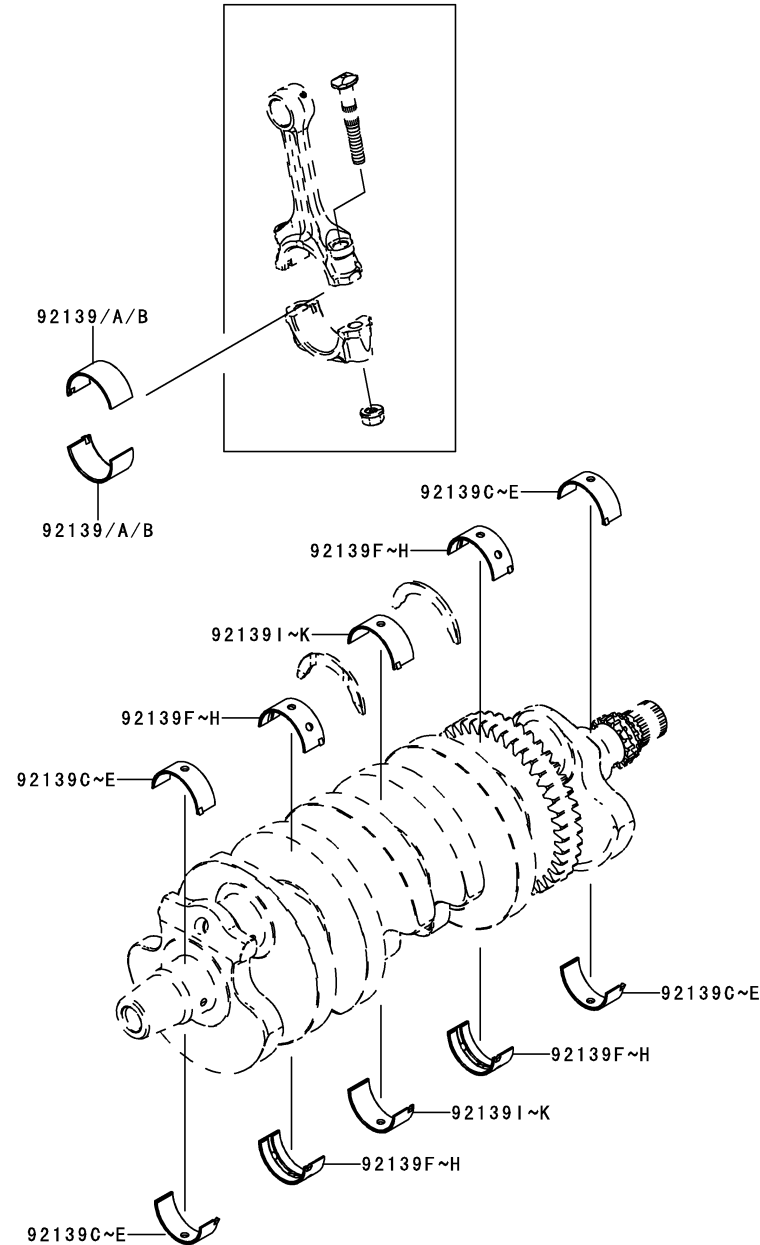
GRID NO.

**B-4**

This grid covers:

**Crankshaft**

E1321



Ref. No.	Part No.	Description	Spec Code	Quantity-ZX600		
				'09	'10	'11
				R9FR	RAFR	RBFR
92139	92139-0194 (OPTION)	BUSHING,CONROD,BLUE		AR	AR	AR
92139A	92139-0195 (OPTION)	BUSHING,CONROD,BLACK		8	8	8
92139B	92139-0196 (OPTION)	BUSHING,CONROD,BROWN		AR	AR	AR
92139C	92139-0269 (OPTION)	BUSHING,CRANK #1&#5,BLUE		AR	AR	AR
92139D	92139-0270 (OPTION)	BUSHING,CRANK #1&#5,BLACK		4	4	4
92139E	92139-0271 (OPTION)	BUSHING,CRANK #1&#5,BROWN		AR	AR	AR
92139F	92139-0272 (OPTION)	BUSHING,CRANK #2&#4,BLUE		AR	AR	AR
92139G	92139-0273 (OPTION)	BUSHING,CRANK #2&#4,BLACK		4	4	4
92139H	92139-0274 (OPTION)	BUSHING,CRANK #2&#4,BROWN		AR	AR	AR
92139I	92139-0275 (OPTION)	BUSHING,CRANK #3,BLUE		AR	AR	AR
92139J	92139-0276 (OPTION)	BUSHING,CRANK #3,BLACK		2	2	2
92139K	92139-0277 (OPTION)	BUSHING,CRANK #3,BROWN		AR	AR	AR

This catalog covers:

'09~'11 ZX600 R9FR/RAFR/RBFR Engine

GRID NO.

**B-5**

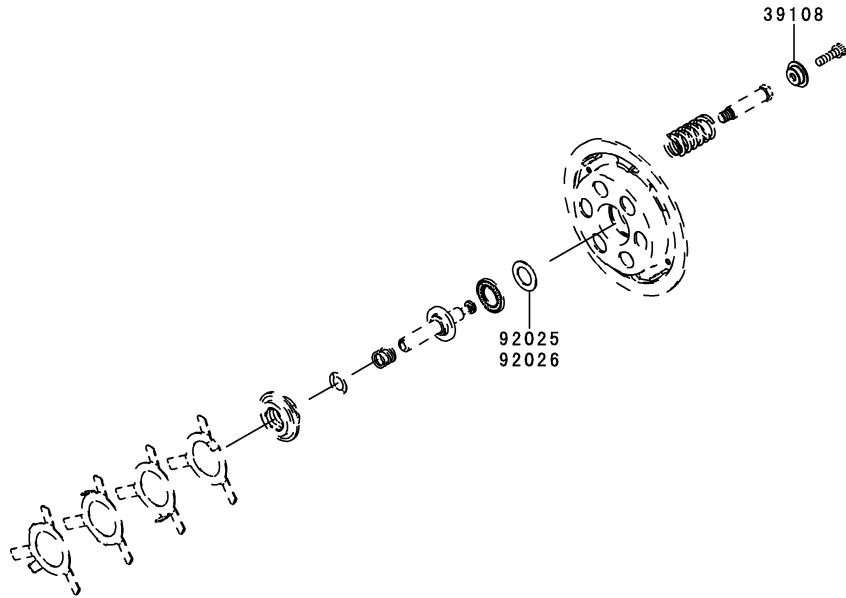
This grid covers:

**Clutch**



E1350

Ref. No.	Part No.	Description	Spec Code	Quantity-ZX600			
				'09	'10	'11	
				R9FR	RAFR	RBFR	
39108	39108-0004 (OPTION)	RETAINER-SPRING,T=5.0(STD-1.0)	6	6	6		
92025	92025-1137 (OPTION)	SHIM,15.3X27.5X1.20	1	1	1		
92026	92026-1590 (OPTION)	SPACER,T=1.5	1	1	1		



This catalog covers:

'09~'11 ZX600 R9FR/RAFR/RBFR Engine

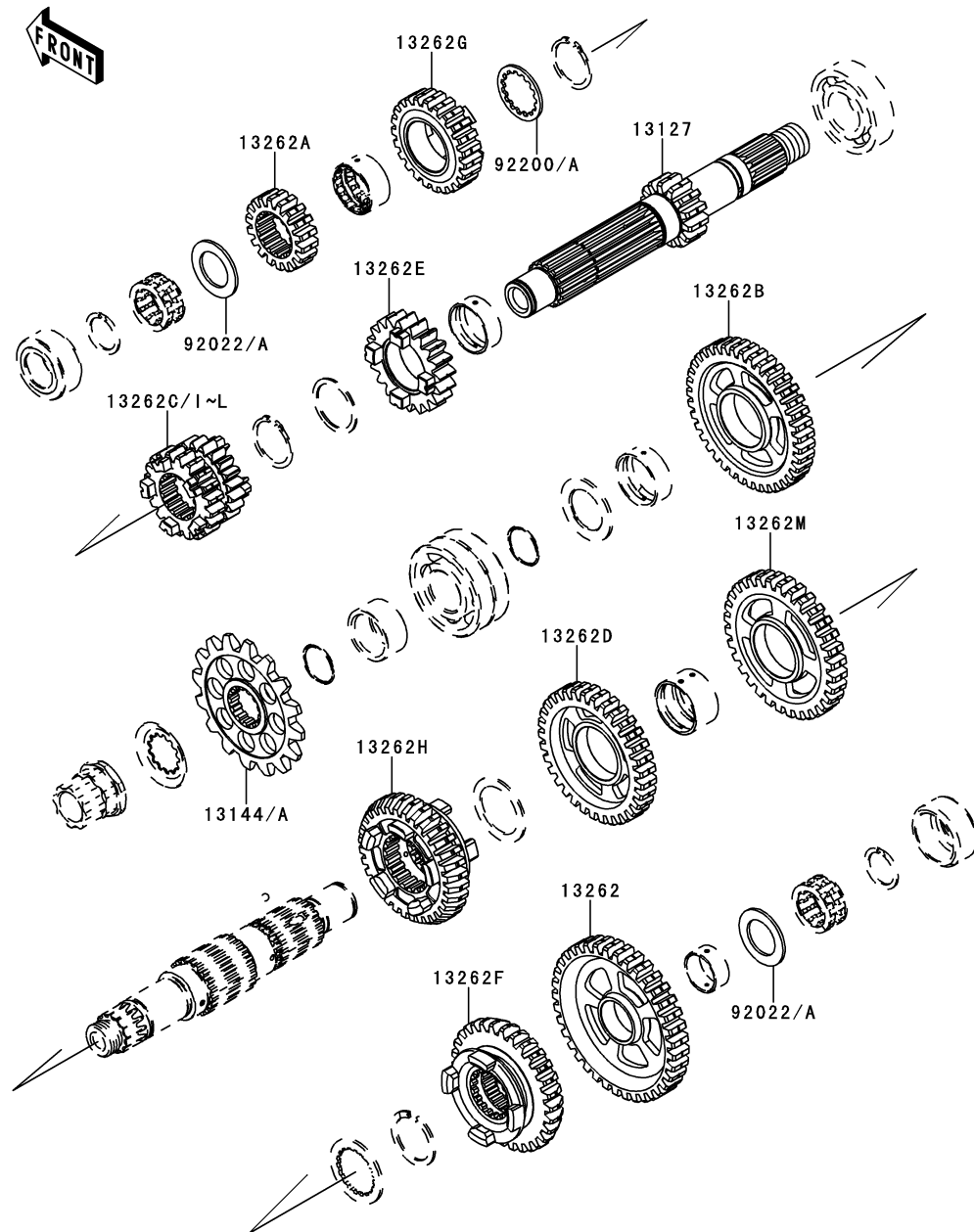
GRID NO.

**B-6**

This grid covers:

**Transmission(TYPE-B)**

E1361



Ref. No.	Part No.	Description	Spec Code	Quantity-ZX600		
				'09	'10	'11
				R9FR	RAFR	RBFR
13127	13127-0055 (OPTION)	SHAFT-TRANSMISSION INPUT,14T		1	1	1
13144	13144-0047 (OPTION)	SPROCKET-OUTPUT,16T		1	1	1
13144A	13144-0048 (OPTION)	SPROCKET-OUTPUT,15T		1	1	1
13262	13262-0526 (OPTION)	GEAR,OUTPUT LOW,37T		1	1	1
13262A	13262-0527 (OPTION)	GEAR,INPUT 2ND,18T		1	1	1
13262B	13262-0528 (OPTION)	GEAR,OUTPUT 2ND,39T		1	1	1
13262C	13262-0529 (OPTION)	GEAR,INPUT 3RD&4TH,20T&20T		1	1	1
13262D	13262-0530 (OPTION)	GEAR,OUTPUT 4TH,33T		1	1	1
13262E	13262-0531 (OPTION)	GEAR,INPUT 5TH,20T		1	1	1
13262F	13262-0532 (OPTION)	GEAR,OUTPUT 5TH,30T		1	1	1
13262G	13262-0533 (OPTION)	GEAR,INPUT 6TH,23T		1	1	1
13262H	13262-0534 (OPTION)	GEAR,OUTPUT 6TH,32T		1	1	1
13262I	13262-0679 (OPTION)	GEAR,INPUT 3RD&4TH,20T&19T		1	1	1
13262J	13262-0680 (OPTION)	GEAR,INPUT 3RD&4TH,17T&20T		1	1	1
13262K	13262-0681 (OPTION)	GEAR,INPUT 3RD&4TH,17T&20T		1	1	1
13262L	13262-0682 (OPTION)	GEAR,INPUT 3RD&4TH,17T&23T		1	1	1
13262M	13262-0683 (OPTION)	GEAR,OUTPUT 3RD,32T		1	1	1
92022	92022-1722 (OPTION)	WASHER,22.3X35X1.8		AR	AR	AR
92022A	92022-212 (OPTION)	WASHER,22.3X35X1.6		AR	AR	AR
92200	92200-0230 (OPTION)	WASHER,28.3X34.0X1.4		AR	AR	AR
92200A	92200-0231 (OPTION)	WASHER,28.3X34.0X1.8		AR	AR	AR

This catalog covers:

'09~'11 ZX600 R9FR/RAFR/RBFR Engine

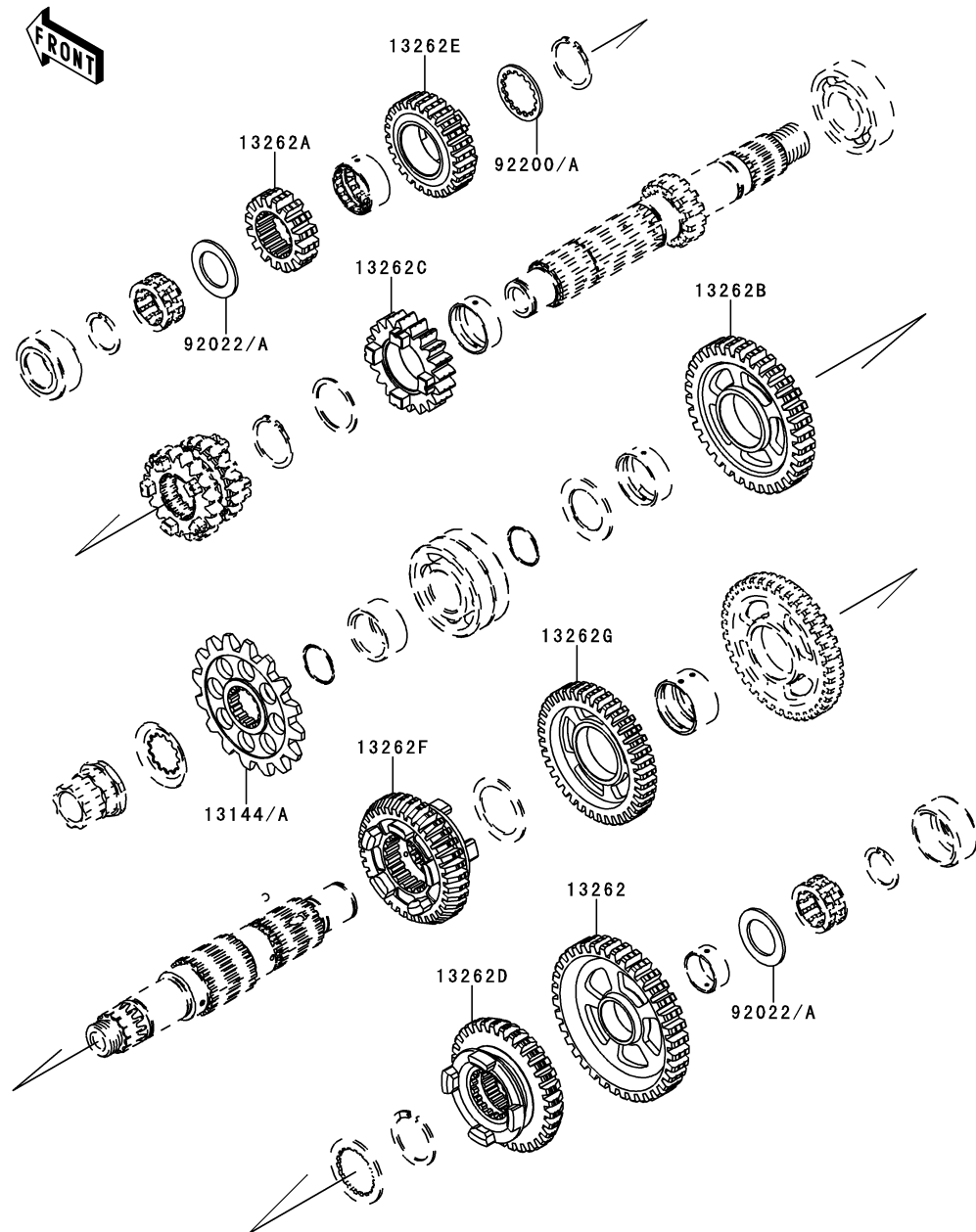
GRID NO.

**B-7**

This grid covers:

**Transmission(TYPE-C)**

E1361A



Ref. No.	Part No.	Description	Spec Code	Quantity-ZX600		
				'09	'10	'11
				R9FR	RAFR	RBFR
13144	13144-0047 (OPTION)	SPROCKET-OUTPUT,16T		1	1	1
13144A	13144-0048 (OPTION)	SPROCKET-OUTPUT,15T		1	1	1
13262	13262-0535 (OPTION)	GEAR,OUTPUT LOW,36T		1	1	1
13262A	13262-0536 (OPTION)	GEAR,INPUT 2ND,16T		1	1	1
13262B	13262-0537 (OPTION)	GEAR,OUTPUT 2ND,34T		1	1	1
13262C	13262-0538 (OPTION)	GEAR,INPUT 5TH,24T		1	1	1
13262D	13262-0539 (OPTION)	GEAR,OUTPUT 5TH,32T		1	1	1
13262E	13262-0540 (OPTION)	GEAR,INPUT 6TH,26T		1	1	1
13262F	13262-0541 (OPTION)	GEAR,OUTPUT 6TH,35T		1	1	1
13262G	13262-0684 (OPTION)	GEAR,OUTPUT 4TH,39T		1	1	1
92022	92022-1722 (OPTION)	WASHER,22.3X35X1.8		AR	AR	AR
92022A	92022-212 (OPTION)	WASHER,22.3X35X1.6		AR	AR	AR
92200	92200-0230 (OPTION)	WASHER,28.3X34.0X1.4		AR	AR	AR
92200A	92200-0231 (OPTION)	WASHER,28.3X34.0X1.8		AR	AR	AR

This catalog covers:

'09~'11 ZX600 R9FR/RAFR/RBFR Engine

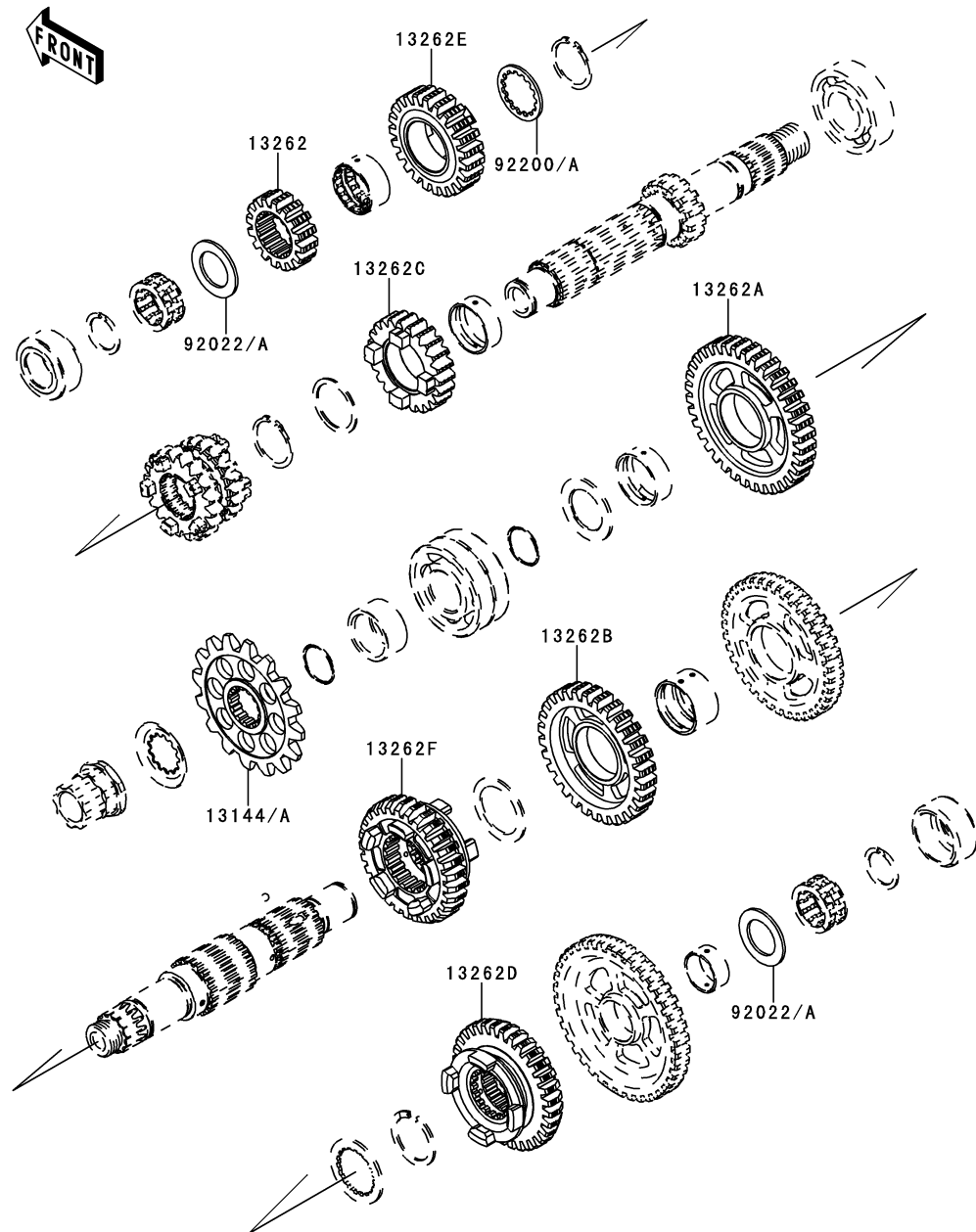
GRID NO.

**B-8**

This grid covers:

**Transmission(TYPE-D)**

E1361B



Ref. No.	Part No.	Description	Spec Code	Quantity-ZX600		
				'09	'10	'11
				R9FR	RAFR	RBFR
13144	13144-0047 (OPTION)	SPROCKET-OUTPUT,16T		1	1	1
13144A	13144-0048 (OPTION)	SPROCKET-OUTPUT,15T		1	1	1
13262	13262-0677 (OPTION)	GEAR,INPUT 2ND,16T		1	1	1
13262A	13262-0678 (OPTION)	GEAR,OUTPUT 2ND,36T		1	1	1
13262B	13262-0685 (OPTION)	GEAR,OUTPUT 4TH,30T		1	1	1
13262C	13262-0686 (OPTION)	GEAR,INPUT 5TH,23T		1	1	1
13262D	13262-0687 (OPTION)	GEAR,OUTPUT 5TH,32T		1	1	1
13262E	13262-0688 (OPTION)	GEAR,INPUT 6TH,23T		1	1	1
13262F	13262-0689 (OPTION)	GEAR,OUTPUT 6TH,29T		1	1	1
92022	92022-1722 (OPTION)	WASHER,22.3X35X1.8		AR	AR	AR
92022A	92022-212 (OPTION)	WASHER,22.3X35X1.6		AR	AR	AR
92200	92200-0230 (OPTION)	WASHER,28.3X34.0X1.4		AR	AR	AR
92200A	92200-0231 (OPTION)	WASHER,28.3X34.0X1.8		AR	AR	AR

This catalog covers:

'09~'11 ZX600 R9FR/RAFR/RBFR Engine

GRID NO.

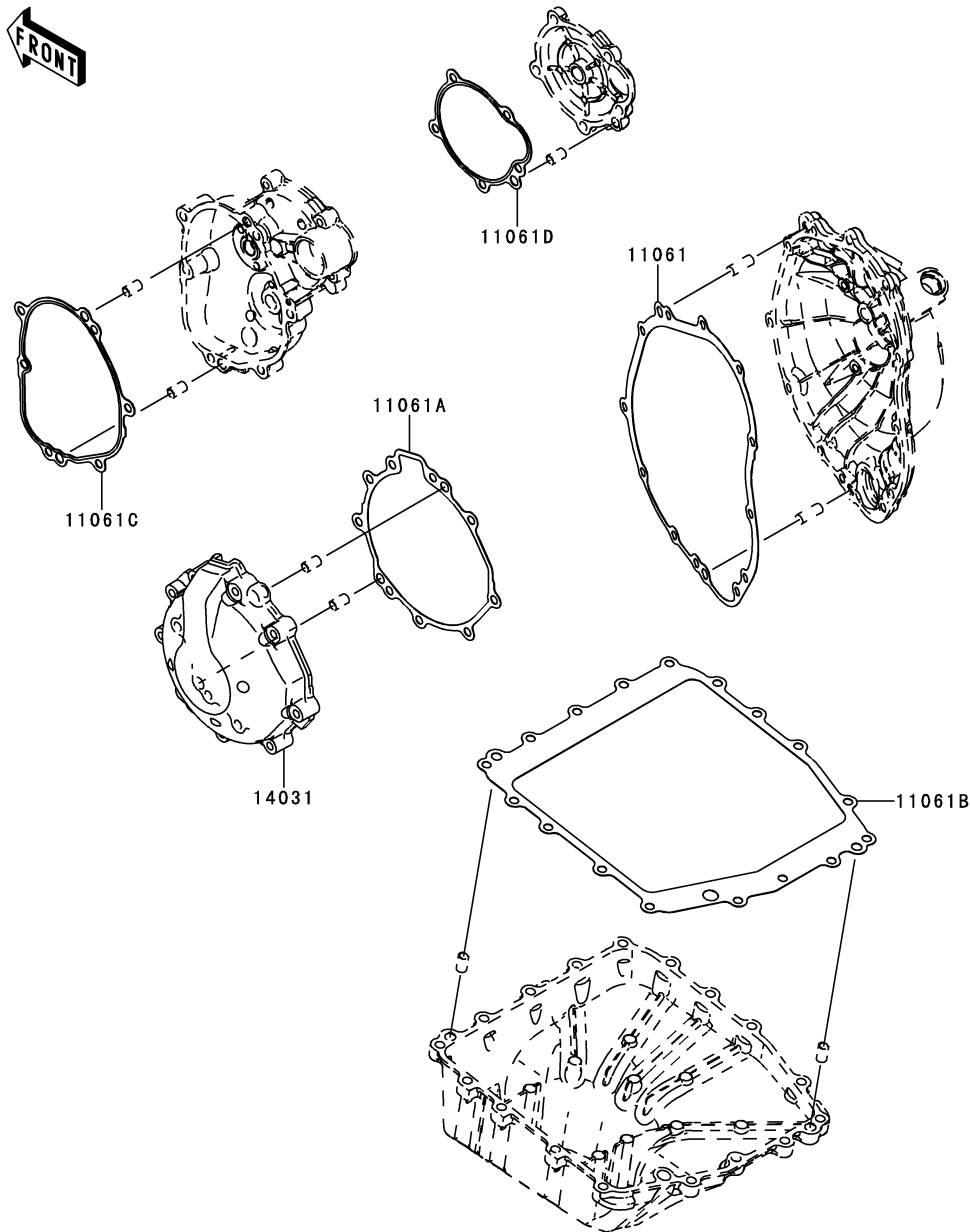
**B-9**

This grid covers:

**Engine Cover(s)**

E1431

Ref. No.	Part No.	Description	Spec Code	Quantity-ZX600		
				'09	'10	'11
				R9FR	RAFR	RBFR
11061	11061-0303 (OPTION)	GASKET,CLUTCH COVER	1	1	1	
11061A	11061-0304 (OPTION)	GASKET,GENERATOR COVER	1	1	1	
11061B	11061-0305 (OPTION)	GASKET,OIL PAN	1	1	1	
11061C	11061-0306 (OPTION)	GASKET,LARGE COVER	1	1	1	
11061D	11061-0307 (OPTION)	GASKET,SMALL COVER	1	1	1	
14031	14031-0084 (OPTION)	COVER-GENERATOR	1	1	1	





This catalog covers:

'09~'11 ZX600 R9FR/RAFR/RBFR Engine

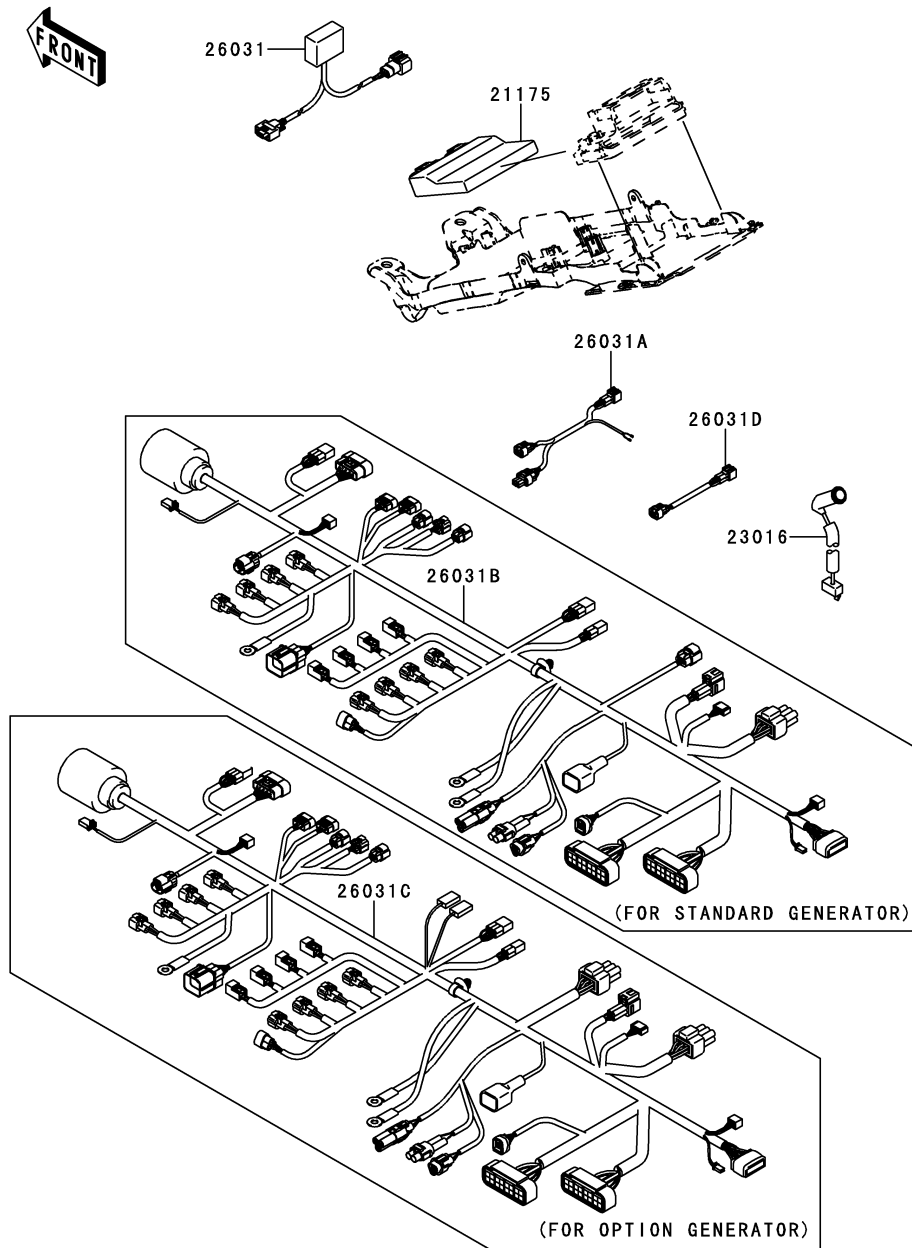
GRID NO.

**B-10**

This grid covers:

**Fuel Injection**

E1530



Ref. No.	Part No.	Description	Spec Code	Quantity-ZX600			
				'09	'10	'11	
				R9FR	RAFR	RBFR	
21175	21175-0248 (OPTION)	CONTROL UNIT-ELECTRONIC	1	1	1		
23016	23016-0006 (OPTION)	LAMP-ASSY,INDICATOR	1	1	1		
26031	26031-0240 (OPTION)	HARNESS,INTERFACE BOX	1	1	1		
26031A	26031-0327 (OPTION)	HARNESS,SUB,STD METER&HARNESS	1	1	1		
26031B	26031-0789 (OPTION)	HARNESS,MAIN,STD GENERATOR	1	1	1		
26031C	26031-0790 (OPTION)	HARNESS,MAIN,KIT GENERATOR	1	1	1		
26031D	26031-0955 (OPTION)	HARNESS,DIAG SYSTEM		1	1		

This catalog covers:

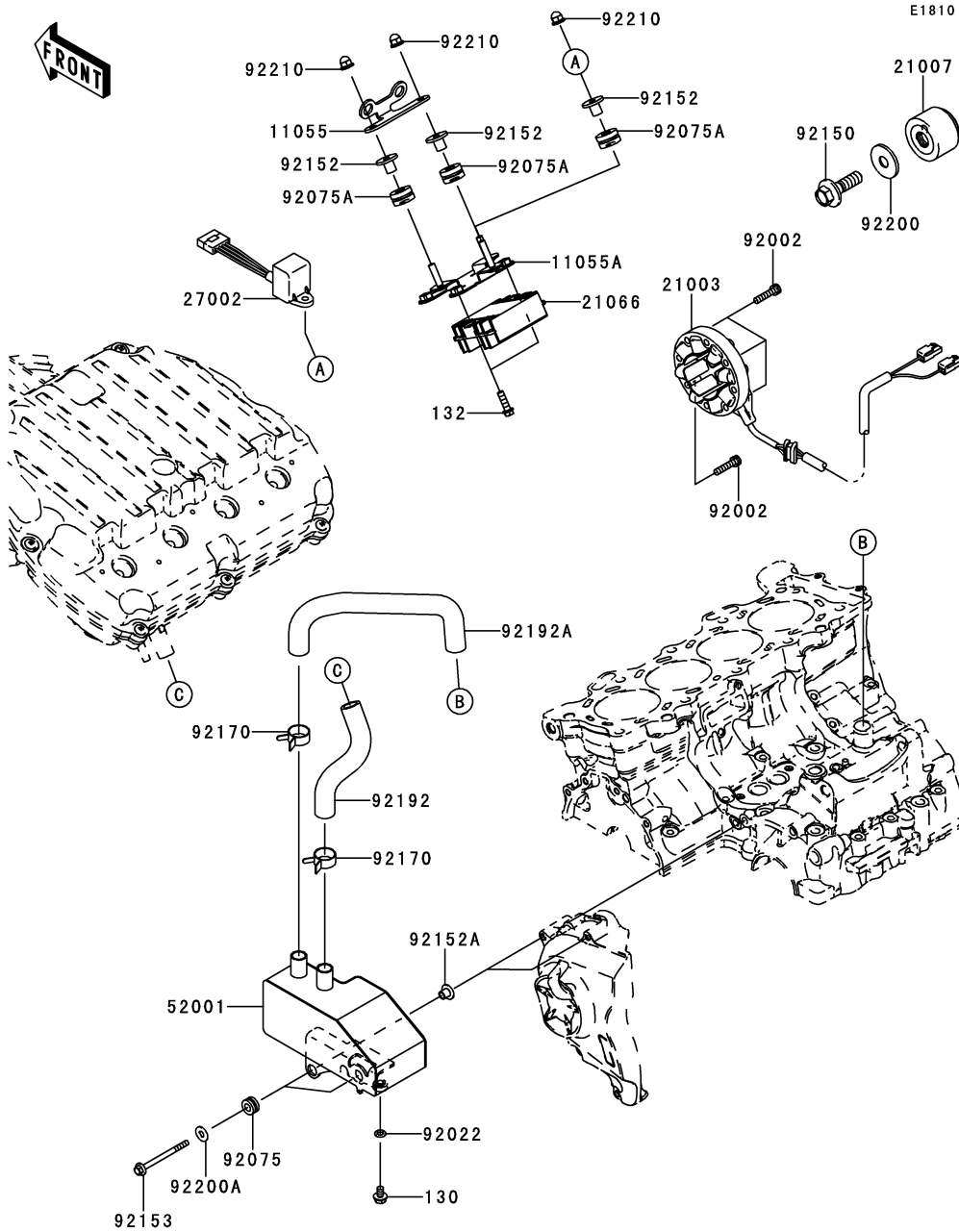
'09~'11 ZX600 R9FR/RAFR/RBFR Engine

GRID NO.

**B-11**

This grid covers:

**Generator**



Ref. No.	Part No.	Description	Spec Code	Quantity-ZX600		
				'09	'10	'11
				R9FR	RAFR	RBFR
11055	11055-1665 (OPTION)	BRACKET,VDS	1	1	1	
11055A	11055-1671 (OPTION)	BRACKET,REGULATOR	1	1	1	
21003	21003-0044 (OPTION)	STATOR	1	1	1	
21007	21007-0083 (OPTION)	ROTOR	1	1	1	
21066	21066-0010 (OPTION)	REGULATOR-VOLTAGE	1	1	1	
27002	27002-3703 (OPTION)	RELAY-ASSY	1	1	1	
52001	52001-0007 (OPTION)	TANK-OIL	1	1	1	
92002	92002-1696 (OPTION)	BOLT,SOCKET,6X25	4	4	4	
92022	92022-304 (OPTION)	WASHER,6.2X11X1	1	1	1	
92075	92075-1912 (OPTION)	DAMPER	2	2	2	
92075A	92075-209 (OPTION)	DAMPER	3	3	3	
92150	92150-1717 (OPTION)	BOLT,12X40	1	1	1	
92152	92152-0091 (OPTION)	COLLAR	3	3	3	
92152A	92152-0237 (OPTION)	COLLAR	2	2	2	
92153	92153-1567 (OPTION)	BOLT,FLANGED,6X65	2	2	2	
92170	92170-1060 (OPTION)	CLAMP	2	2	2	
92192	92192-0819 (OPTION)	TUBE,OIL TANK-AIR BOX	1	1	1	
92192A	92192-0820 (OPTION)	TUBE,CRANKCASE-OIL TANK	1	1	1	
92200	92200-0306 (OPTION)	WASHER,12X36X3.2	1	1	1	
92200A	92200-3712 (OPTION)	WASHER,6.5X16X1.0	2	2	2	
92210	92210-0322 (OPTION)	NUT,CAP,6MM	3	3	3	
130	130BD0610 (OPTION)	BOLT-FLANGED,6X10	1	1	1	
132	132BA0620 (OPTION)	BOLT-FLANGED-SMALL,6X20	2	2	2	

This catalog covers:

'09~'11 ZX600 R9FR/RAFR/RBFR Chassis

GRID NO.

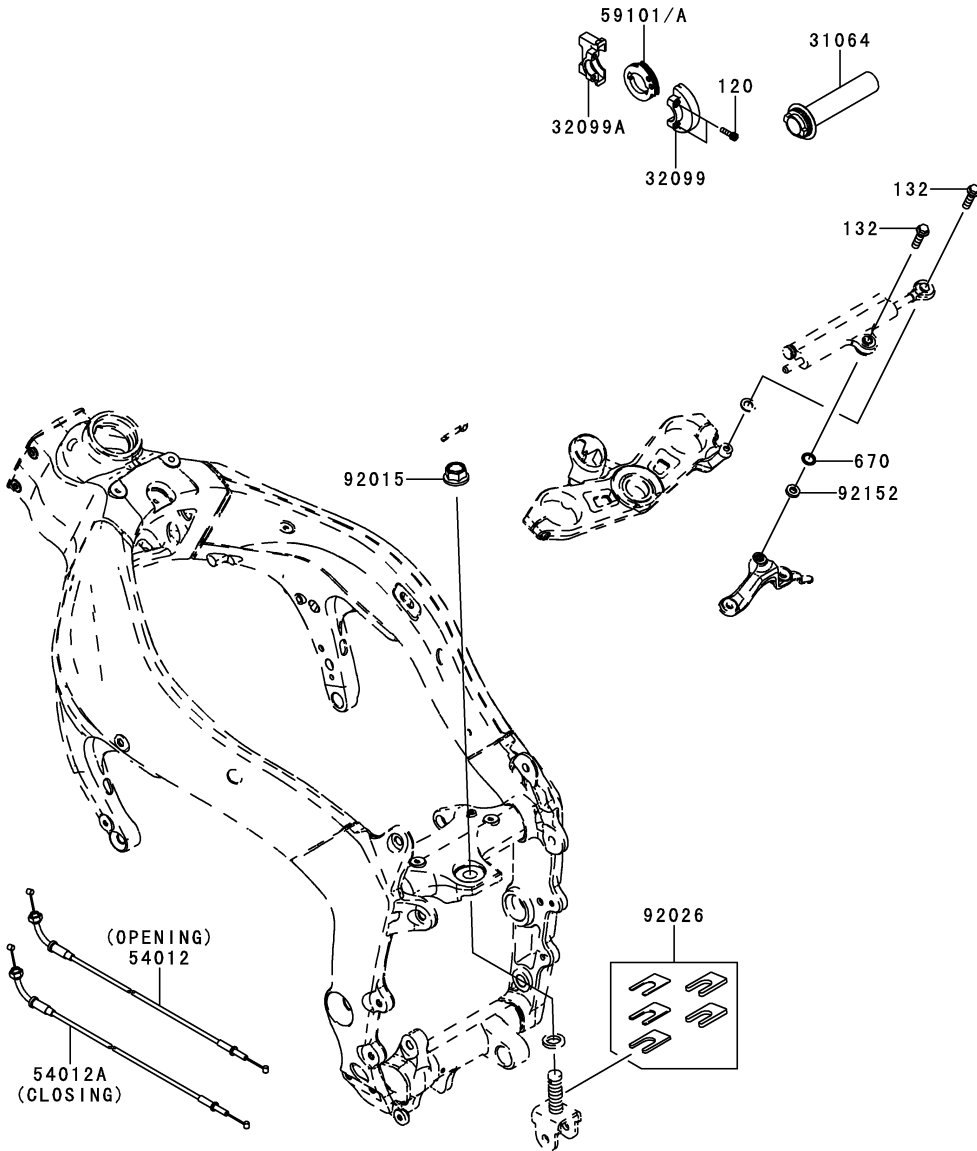
**C-3**

This grid covers:

**Frame Fittings**

F2130

Ref. No.	Part No.	Description	Spec Code	Quantity-ZX600		
				'09	'10	'11
				R9FR	RAFR	RBFR
31064	31064-0187 (OPTION)	PIPE-COMP,GRIP		1	1	1
32099	32099-0046 (OPTION)	CASE,UPP		1	1	1
32099A	32099-0047 (OPTION)	CASE,LWR		1	1	1
54012	54012-0270 (OPTION)	CABLE-THROTTLE,OPENING		1	1	1
54012A	54012-0271 (OPTION)	CABLE-THROTTLE,CLOSING		1	1	1
59101	59101-0006 (OPTION)	REEL,R19.3,65DEG		1	1	1
59101A	59101-0007 (OPTION)	REEL,R21.0,60DEG		1	1	1
92015	92015-1316 (OPTION)	NUT,FLANGED,16MM		1	1	1
92026	92026-1586 (OPTION)	SPACER,SET		1	1	1
92152	92152-0798 (OPTION)	COLLAR,8X16X3.5		1	1	1
120	120CA0518 (OPTION)	BOLT-SOCKET,5X18		2	2	2
132	132BA0830 (OPTION)	BOLT-FLANGED-SMALL,8X30		2	2	2
670	670B2012 (OPTION)	O RING,12MM		1	1	1



This catalog covers:

'09~'11 ZX600 R9FR/RAFR/RBFR Chassis

GRID NO.

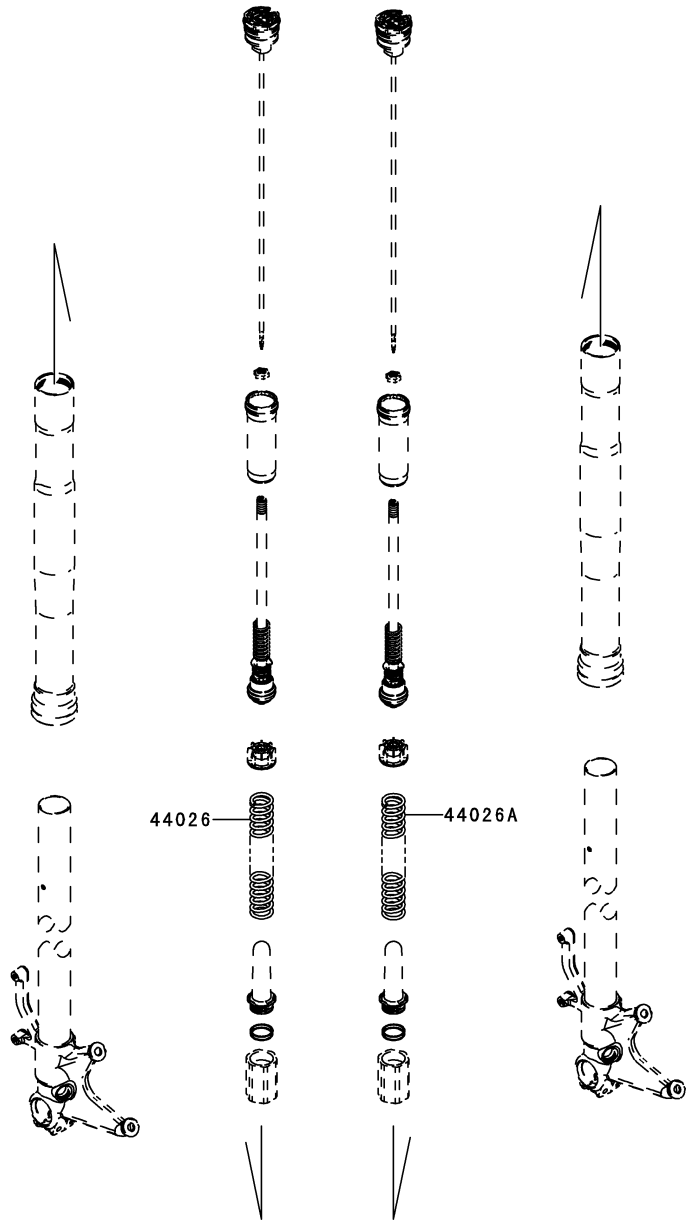
**C-4**

This grid covers:

**Front Fork**

F2340

Ref. No.	Part No.	Description	Spec Code	Quantity-ZX600			
				'09	'10	'11	
				R9FR	RAFR	RBFR	
44026	44026-0141 (OPTION)	SPRING-FRONT FORK,K=8.75N/MM	1	1	1		
44026A	44026-0142 (OPTION)	SPRING-FRONT FORK,K=9.75N/MM	1	1	1		



This catalog covers:

'09~'11 ZX600 R9FR/RAFR/RBFR Chassis

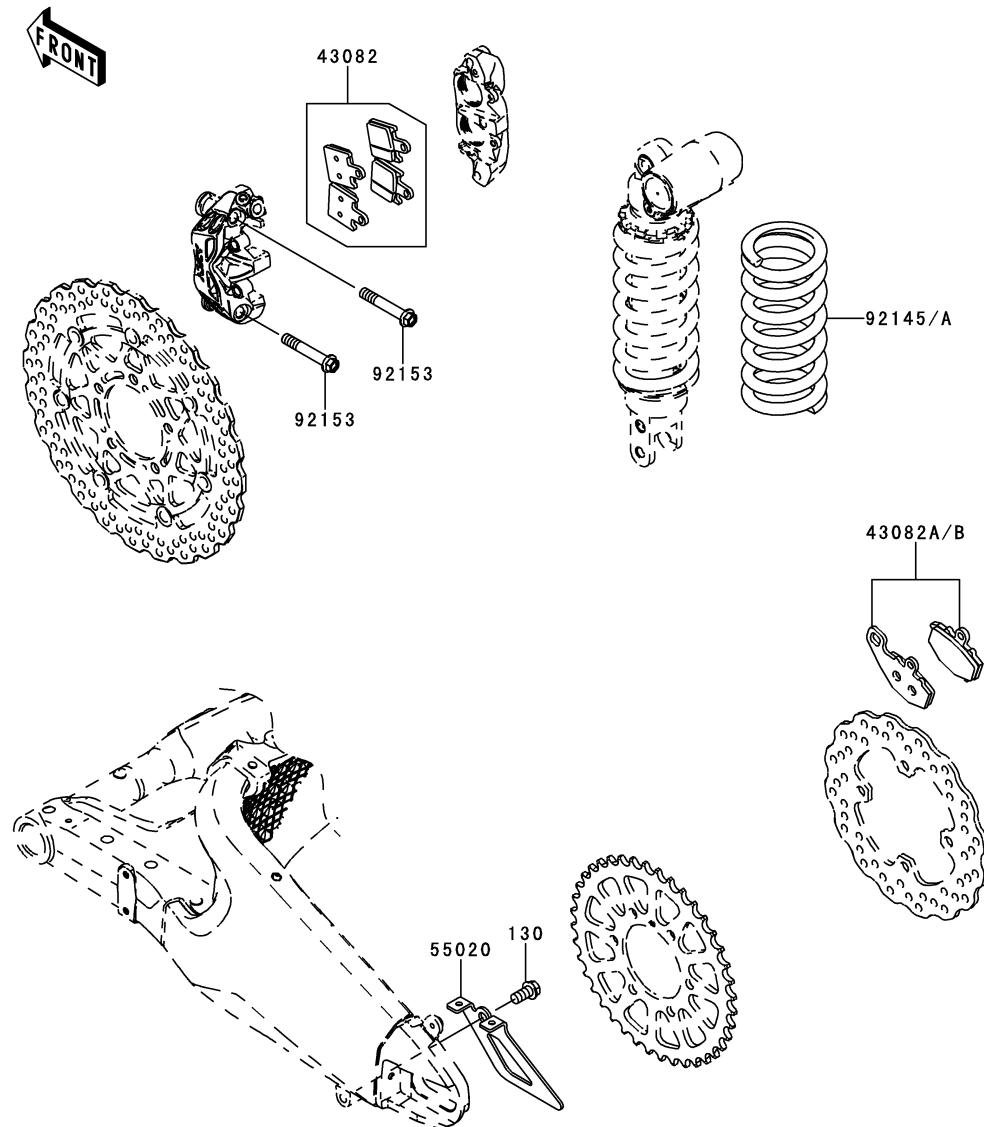
GRID NO.

C-5

This grid covers:

Other

F2750



Ref. No.	Part No.	Description	Spec Code	Quantity-ZX600		
				'09	'10	'11
				R9FR	RAFR	RBFR
43082	43082-0074 (OPTION)	PAD-ASSY-BRAKE,FR		1	1	1
43082A	43082-1192 (OPTION)	PAD-ASSY-BRAKE,RR,C93		1	1	1
43082B	43082-1220 (OPTION)	PAD-ASSY-BRAKE,RR,C93G		1	1	1
55020	55020-0028 (OPTION)	GUARD,CHAIN		1	1	1
92145	92145-0504 (OPTION)	SPRING,SHOCKABSORBER,K=95N/MM		1	1	1
92145A	92145-0506 (OPTION)	SPRING,SHOCKABSORBER,K=105N/MM		1	1	1
92153	92153-1777 (OPTION)	BOLT,FLANGED,10X60		4	4	4
130	130BA1020 (OPTION)	BOLT-FLANGED,10X20		1	1	1

2016MY ZX-6R kit part list

2015.10.13.

Part#	qty per bike	NAME	REMARKS	ORIGIN	PRICE IVA ESCLUSA	PRICE IVA INCLUSA
<b>CHAIN GUARD</b>						
<b>safety regulation</b>						
55020-0028	1	CHAIN GUARD	fulfill most of safty regulation	existing kit	€ 28,03	€ 34,20
130BA1020	1	BOLT		mass		
<b>OPTIONAL FRONT FORK SPRING</b>						
<b>chassis setting</b>						
44026-0141	1	SPRING	K=8.75N/MM	existing kit	€ 47,68	€ 58,17
44026-0142	1	SPRING	K=9.75N/MM	existing kit	€ 47,68	€ 58,17
<b>OPTIONAL REAR SHOCKABSORBER SPRING</b>						
<b>chassis setting</b>						
92145-0504	1	SPRING	K=95N/MM, FOR STD SHHOCK UNIT	existing kit	abolished	abolished
92145-0506	1	SPRING	K=105N/MM, FOR STD SHOCK UNIT	existing kit	abolished	abolished
<b>STEERING DAMPER HOLDER</b>						
<b>steering stability</b>						
132BA0830	2	BOLT		mass		
410AA0800	1	WASHER		mass		
92152-0798	1	COLLAR		ZX600R		
670B2012	2	O-RING		mass		
<b>REAR HEIGHT ADJUSTER</b>						
<b>chassis setting</b>						
92015-1316	1	NUT		mass		
92026-1586	1	SPACER SET	SET OF SPACERS, T=1.0/2.0/3.2/4.5	mass		
<b>FRONT BRAKE PAD</b>						
<b>preciser braking</b>						
43082-0074	2	PAD	MATERIAL "9633"	existing kit	€ 128,18	€ 156,38
92153-1777	4	BOLT	fr-caliper mount	existing kit	€ 8,80	€ 10,74
<b>REAR BRAKE PAD</b>						
<b>preciser braking</b>						
43082-1220	1	PAD, material "C93G"	lower braking force than STD	existing kit	€ 49,98	€ 60,98
43082-1192	1	PAD, material "C93"	still lower than C93G	existing kit	€ 49,98	€ 60,98
<b>HI-THROTTLE KIT (NEW CONFIGURATION)</b>						
<b>preciser throttle work</b>						
31064-0187	1	GRIP INNER PIPE	grip inner pipe	existing kit	see ZX-10R	see ZX-10R
32099-0046	1	THROTTLE CASE	upper, high-throttle	existing kit	see ZX-10R	see ZX-10R
32099-0047	1	THROTTLE CASE	lower, hugh-throttle	existing kit	see ZX-10R	see ZX-10R
59101-0006	1	THROTTLE REEL	R19.3/65DEG	existing kit	€ 123,31	€ 150,43
59101-0007	1	THROTTLE REEL	R21.0/60DEG	existing kit	€ 123,31	€ 150,43
54012-0270	1	THROTTLE CABLE	open	existing kit	€ 19,07	€ 23,26
54012-0271	1	THROTTLE CABLE	close	existing kit	€ 22,25	€ 27,14
120CA0518	2	BOLT		mass		
<b>METER-ACCESSORY</b>						
<b>legible indication</b>						
23016-0006	1	LAMP-ASSY	shift up indicator	existing kit	substituted to see ZX-10R	substituted to see ZX-10R
23016-0556		LAMP-ASSY				
<b>ELECTRIC HARNESS</b>						
<b>to accommodate kit ECU in various manner</b>						
26031-0327	1	HARNESS	sub	existing kit	€ 21,64	€ 26,40
26031-0789	1	HARNESS	main, for STD GENERATOR	existing kit	€ 254,74	€ 310,78
26031-0790	1	HARNESS	main, for KITgenerator	existing kit	€ 254,74	€ 310,78
26031-0955		harness		existing kit	€ 54,46	€ 66,45
27002-3703	1	RELAY-ASSY		mass		
11055-1665	1	BRACKET FOR CRASH SENSOR		existing kit	€ 15,83	€ 19,32
<b>CYLINDER HEAD GASKETS</b>						
<b>compression adjustment</b>						
11004-0067	1	HEAD GASKET	T=0.70(STD+0.05)	existing kit	€ 19,19	€ 23,42
11004-0068	1	HEAD GASKET	T=0.60(STD-0.05)	existing kit	€ 17,60	€ 21,48
11004-0069	1	HEAD GASKET	T=0.55(STD-0.10)	existing kit	€ 17,60	€ 21,48
11004-0070	1	HEAD GASKET	T=0.50(STD-0.15)	existing kit	€ 15,99	€ 19,51
11004-0071	1	HEAD GASKET	T=0.45(STD-0.20)	existing kit	€ 15,99	€ 19,51
92043-1506	4	PIN	PLUG:ASV-HOLES	mass		
<b>OIL CATCH TANK</b>						
<b>safety regulation</b>						
52001-0007	1	OIL CATCH TANK		existing kit	€ 196,66	€ 239,92
92075-1912	2	DAMPER	FOR TANK	mass		
92153-1567	2	BOLT	FOR TANK	mass		
92152-0237	2	COLLAR	FOR TANK	mass		
92200-3712	2	WASHER	FOR TANK	mass		
130BD0610	1	BOLT	DRAINN BOLT	mass		
92022-304	1	WASHER	DRAIN WASHER	mass		
92192-0819	1	TUBE	TANK-AIR BOX	existing kit	€ 24,57	€ 29,98
92192-0820	1	TUBE	CRANKCASE-TANK	existing kit	€ 24,57	€ 29,98

92170-1060	2	CLAMP	FOR TUBE	mass		
<b>CAM CHAIN TENSIONER</b>			<b>durability</b>			
12048-1175	1	TENSIONER ASSY	MANUAL adjust	existing kit	€ 120,17	€ 146,61
92015-1078	1	NUT		mass		
92055-011	1	O-RING		mass		
92055-086	1	O-RING		mass		
132BA0620	2	BOLT-FLANGED-	SPARE PARTS TO TENSIONER ASSY	mass		
<b>CONROD BIG END METAL</b>			<b>anti seizure and wear resistance</b>			
92139-0194	AR	BUSHING	CONROD BIG END, BLUE	existing kit	€ 20,15	€ 24,58
92139-0195	8	BUSHING	CONROD BIG END, BLACK	existing kit	€ 20,15	€ 24,58
92139-0196	AR	BUSHING	CONROD BIG END, BROWN	existing kit	€ 20,15	€ 24,58
<b>CRANKSHAFT JOURNAL METAL</b>			<b>anti seizure and wear resistance</b>			
92139-0269	AR	BUSHING	for journal #1 and #5, BLUE	existing kit	€ 28,21	€ 34,42
92139-0270	4	BUSHING	for journal #1 and #5, BLACK	existing kit	€ 28,21	€ 34,42
92139-0271	AR	BUSHING	for journal #1 and #5, BROWN	existing kit	€ 28,21	€ 34,42
92139-0272	AR	BUSHING	for journal #2 and #4, BLUE	existing kit	€ 28,21	€ 34,42
92139-0273	4	BUSHING	for journal #2 and #4, BLACK	existing kit	€ 28,21	€ 34,42
92139-0274	AR	BUSHING	for journal #2 and #4, BROWN	existing kit	€ 28,21	€ 34,42
92139-0275	AR	BUSHING	for journal #3, BLUE	existing kit	€ 28,21	€ 34,42
92139-0276	2	BUSHING	for journal #3, BLACK	existing kit	€ 28,21	€ 34,42
92139-0277	AR	BUSHING	for journal #3, BROWN	existing kit	€ 28,21	€ 34,42
<b>SLIPPER CLUTCH ADJUSTMENT PARTS</b>			<b>adjust slipper clutch setting</b>			
39108-0004	6	RETAINER	L=5 (STD-1MM)	existing kit	€ 18,28	€ 22,30
92025-1137	1	SHIM	adjust lever position	mass		
92026-1590	1	SPACER	adjust lever position	mass		
<b>ENGINE SPROCKET</b>						
13144-0047	1	SPROCKET	16T	existing kit	€ 136,18	€ 166,15
13144-0048	1	SPROCKET	15T	existing kit	abolished	abolished
<b>TRANSMISSION (TYPE-B)</b>			<b>TYPE-B</b>			
13127-0055	1	INPUT SHAFT	TYPE-B&C 14T	existing kit	€ 271,93	€ 331,75
13262-0526	1	GEAR	LOW-OUT 37T	existing kit	€ 192,26	€ 234,56
13262-0527	1	GEAR	2ND-IN 18T	existing kit	€ 136,18	€ 166,15
13262-0528	1	GEAR	2ND-OUT 39T	existing kit	€ 144,19	€ 175,92
13262-0683	1	GEAR	3RD-OUT(32T)	existing kit	€ 144,19	€ 175,92
13262-0530	1	GEAR	4TH-OUT 33T	existing kit	€ 144,19	€ 175,92
13262-0531	1	GEAR	5TH-IN 20T	existing kit	€ 192,26	€ 234,56
13262-0532	1	GEAR	5TH-OUT 30T	existing kit	€ 198,66	€ 242,36
13262-0533	1	GEAR	6TH-IN 23T	existing kit	€ 184,26	€ 224,79
13262-0534	1	GEAR	6TH-OUT 32T	existing kit	€ 224,30	€ 273,64
<b>TRANSMISSION (TYPE-C)</b>			<b>TYPE-C</b>			
13262-0535	1	GEAR	LOW-OUT 36T	existing kit	€ 192,26	€ 234,56
13262-0536	1	GEAR	2ND-IN 16T	existing kit	€ 160,21	€ 195,46
13262-0537	1	GEAR	2ND-OUT 34T	existing kit	€ 173,04	€ 211,11
13262-0684	1	GEAR	4TH-OUT(39T)	existing kit	€ 144,19	€ 175,92
13262-0538	1	GEAR	5TH-IN 22T	existing kit	€ 192,26	€ 234,56
13262-0539	1	GEAR	5TH-OUT 32T	existing kit	€ 224,30	€ 273,64
13262-0540	1	GEAR	6TH-IN 26T	existing kit	€ 184,26	€ 224,79
13262-0541	1	GEAR	6TH-OUT 35T	existing kit	€ 224,30	€ 273,64
<b>TRANSMISSION (TYPE-D)</b>			<b>TYPE-D</b>			
13262-0677	1	GEAR	2ND-IN(16T)	existing kit	€ 136,18	€ 166,15
13262-0678	1	GEAR	2ND-OUT(36T)	existing kit	€ 144,19	€ 175,92
13262-0685	1	GEAR	4TH-OUT(30T)	existing kit	€ 144,19	€ 175,92
13262-0686	1	GEAR	5TH-IN(23T)	existing kit	€ 192,26	€ 234,56
13262-0687	1	GEAR	5TH-OUT(32T)	existing kit	€ 198,66	€ 242,36
13262-0688	1	GEAR	6TH-IN(23T)	existing kit	€ 184,26	€ 224,79
13262-0689	1	GEAR	6TH-OUT(29T)	existing kit	€ 224,30	€ 273,64
<b>VARIETY OF 3RD/4TH-IN</b>			<b>3RD/4TH-IN</b>			
13262-0529	1	GEAR	3/4-IN:A/B	existing kit	€ 259,54	€ 316,64
13262-0679	1	GEAR	3/4-IN:A/D	existing kit	€ 259,54	€ 316,64
13262-0680	1	GEAR	3/4-IN:B/A	existing kit	€ 320,44	€ 390,94
13262-0681	1	GEAR	3/4-IN:B/B	existing kit	€ 320,44	€ 390,94
13262-0682	1	GEAR	3/4-IN:B/C	existing kit	€ 259,54	€ 316,64
<b>TRANSMISSION SHIM</b>			<b>keep axial clearance</b>			
92022-1722	AR	SHIM	T=1.8 ADJ SHIM	existing kit	€ 4,80	€ 5,86
92022-212	AR	SHIM	T=1.6 ADJ SHIM	mass		

92200-0230	AR	SHIM	T=1.4 ADJ SHIM	existing kit
92200-0231	AR	SHIM	T=1.8 ADJ SHIM	existing kit
<b>GASKET FOR COVERS</b>			<b>easier removal for repeated service</b>	
11061-0303	1	GASKET	CLUTCH COVER	existing kit
11061-0304	1	GASKET	GENERATOR COVER	existing kit
11061-0305	1	GASKET	OIL PAN	existing kit
11061-0306	1	GASKET	STARTER-LARGE	existing kit
11061-0307	1	GASKET	STARTER-SMALL	existing kit
<b>FUEL INJECTION</b>			<b>mapping programmable</b>	
21175-0248	1	ECU	KIT ECU	existing kit
26031-0999	1	HARNESS	ECU TO LAPTOP	2011 new
<b>GENERATOR (INNER ROTER TYPE)</b>			<b>less inertia with smaller flywheel mass, less weight</b>	
14031-0084	1	GENERATOR COVER	FOR KIT-GENERATOR	existing kit
21003-0044	1	STATOR		existing kit
21007-0083	1	ROTOR		existing kit
92002-1696	4	BOLT	FOR-STATOR	mass
92150-1717	1	BOLT	FOR-ROTER	mass
92200-0306	1	WASHER	FOR-ROTER	existing kit
<b>REGULATOR</b>			<b>to use with kit generator</b>	
21066-0010	1	REGULATOR		mass
11055-1671	1	BRACKET	FOR REGULATOR	ZX600R
132BA0620	2	BOLT-FLANGED-		mass
92075-209	3	DAMPER		mass
92152-0091	3	COLLAR		mass
92210-0322	3	NUT		mass

see ZX-10R	see ZX-10R
see ZX-10R	see ZX-10R
€ 32,03	€ 39,08
€ 22,43	€ 27,37
€ 32,03	€ 39,08
€ 19,22	€ 23,45
€ 19,22	€ 23,45
€ 474,38	€ 578,74
see ZX-10R	see ZX-10R
€ 781,85	€ 953,86
€ 877,58	€ 1.070,65
€ 718,03	€ 875,99
€ 5,28	€ 6,44
€ 19,86	€ 24,23